

# CP2

## Level 2 / Level 1 Chest Protection

### Mitigate Fear. Prevent Injury.

**D30's dilatant materials are designed to absorb and dissipate energy in response to blunt force impact.**

Ride confidently with the D30® CP2, the world's first dual-certified chest protector.

Slim. Lightweight. Breathable. CP2 surpasses both CE Level 2 and Level 1 certification, with unparalleled comfort, so you can focus on pushing forward – whether racing or roaming on two wheels.

### Product Features

- Enhanced breathability
- Low-profile and lightweight
- Compact, seamless fit
- Winged design
- Certified to both EN 1621-3 Level 2 and Level 1 (hard-shell removed)
- Extended hard-shell coverage beyond mandatory protection zones
- Type B offering maximum coverage
- Retrofittable in existing CP1 products
- Full and divided options available for all garment/jacket types



# CP2

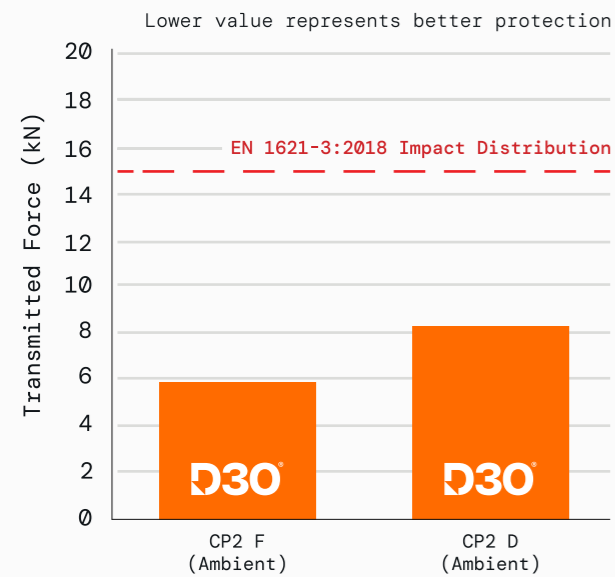
## Level 2 / Level 1 Chest Protection

### Product Details

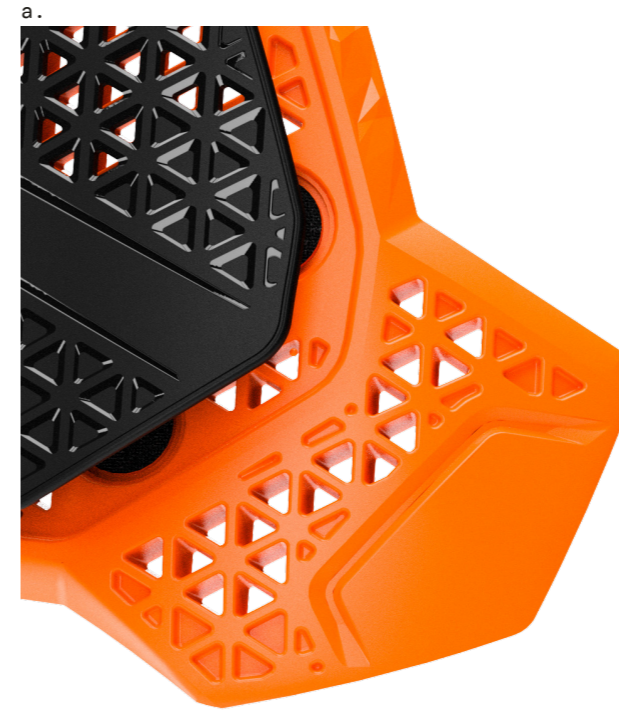
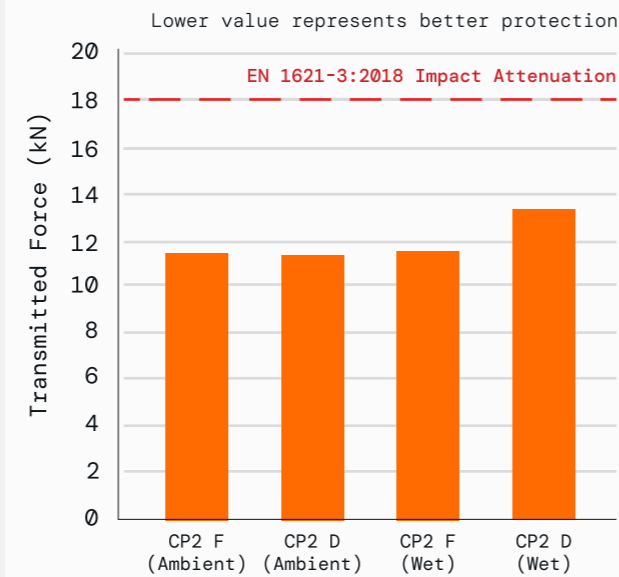
Product Name	CP2 F	CP2 D L	CP2 D R
Product Code	14893	14894	14895
Dimensions (mm)	335 x 244	174 x 244	174 x 244
Thickness (mm)	13.5	13.5	13.5
Weight (g)	240	128	128

### Test Results

CP2 (with shell) tested to EN 1621-3:2018 (Impact Distribution)



CP2 (without shell) tested to EN 1621-3:2018 (Impact Attenuation)



### KEY FEATURES

- a. enhanced breathability
- b. low-profile & lightweight
- c. dual-certified to Level 2 and Level 1

